

Party Time - 1

1-9: For these questions, choose the best word or expression to fill the blank(s).

1. The day after Sunday is - - - -.

- A) Saturday B) Monday C) Tuesday D) Thursday

2.



- A) use the computer
B) go to the cinema
C) look at the book
D) watch television

3. Tim - - - - for his birthday party.

- A) sees a doctor
B) plays football
C) invites his friends
D) goes to bed

4. Sarah : Can I leave the classroom?

Teacher : - - - -

Sarah : I feel bad.

- A) Why?
B) Really?
C) Of course.
D) You're welcome.

5. Timothy : When is your birthday?

Sam : - - - -.

- A) I have a party
B) It's on 3rd April
C) I need two candles
D) It's at 2 o'clock

6. Jane : - - - -?

Jack : No. But we must buy a cake and lots of drinks.

- A) Do we need a clown for your party
B) What do we need for the birthday party
C) Can I have my birthday party here
D) Can you buy a big chocolate cake

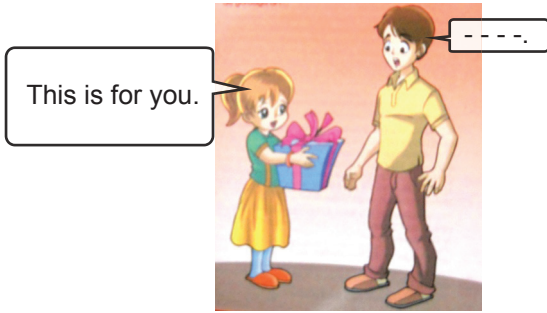
7. Amy : Let's go to the cinema.

Andrew : I'm sorry, I can't. - - - -.

- A) I read a book every day
B) I can decorate the house
C) I must do my homework
D) I like football and tennis

Party Time - 1

8.



- A) Thank you
B) You are welcome
C) See you tomorrow
D) Nice to see you

10.

Please join my birthday party.

ANNA

Place : Star Cafe

Date : 23rd March, Saturday

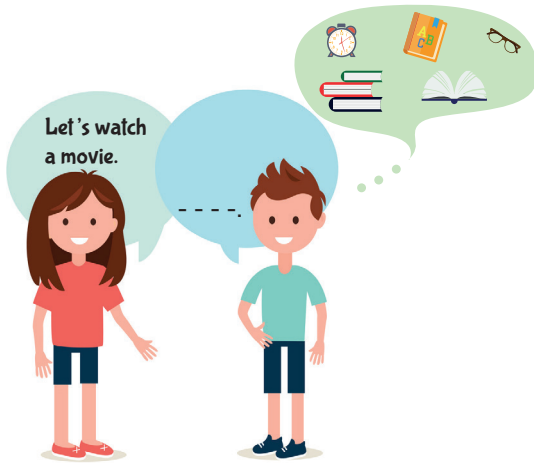
Time : 14:00



When is Anna's birthday party?

- A) On 23rd March.
B) Anna and her friends.
C) At a café.
D) In the evening.

9.



- A) I love sci-fi movies
B) See you at the cinema
C) I must do my homework
D) Then, we can buy popcorn

11. Which of the following is CORRECT according to the table below?

	BIRTHDAY	NEEDS
CAROL	March	A cake Beverages
ASHLEY	August	A clown
MATT	September	Invitation cards
TOM	May	Balloons Candles

Matt's birthday is on the - - - - month of the year.

- A) 3rd B) 8th C) 9th D) 5th

12. Which of the following matchings is NOT correct?

A)



CANDLES

B)



CLOWN

C)



CAKE

D)



BALLOONS